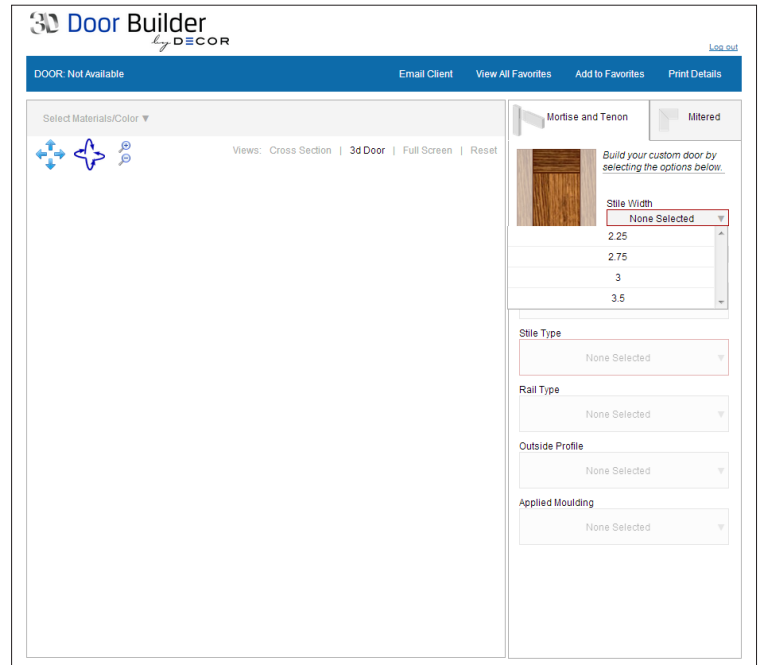


BUILDING YOUR DOOR

Begin by selecting the type of door **Mortise and Tenon** or **Mitered**
Continue building your door style by selecting different options.

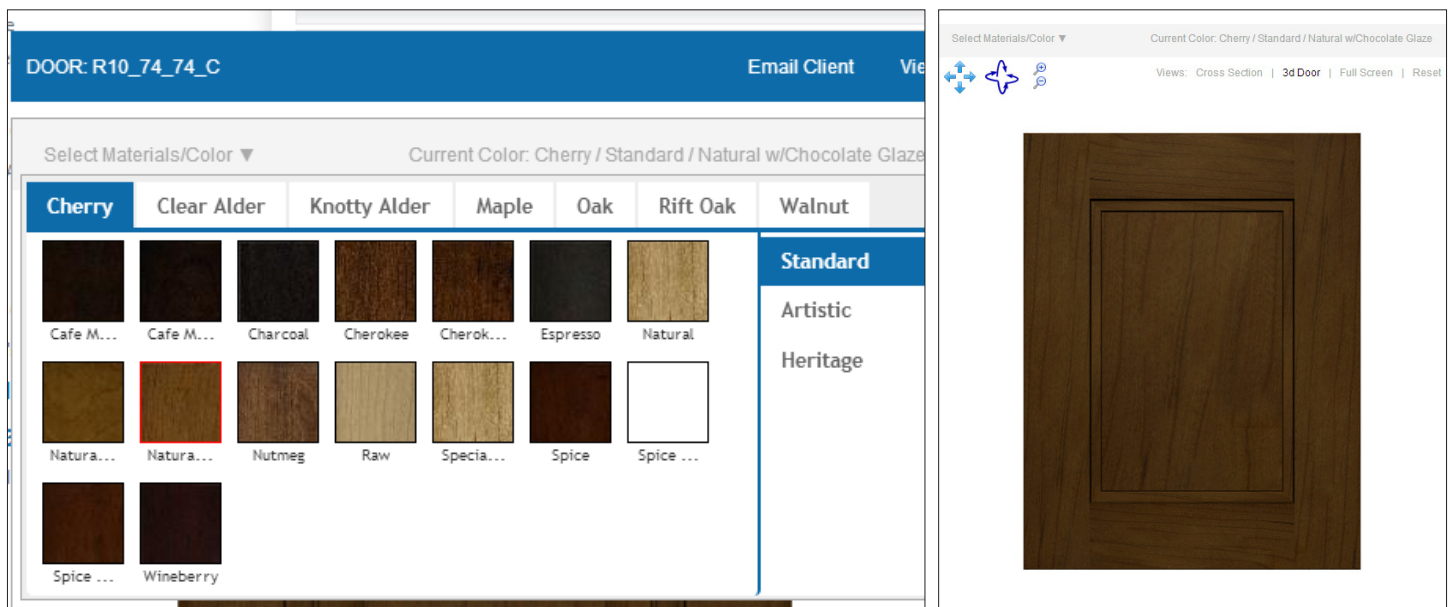
- › Stile Width
- › Rail Width
- › Center Panel
- › Stile Type
- › Rail Type
- › Outside Profile
- › Applied Moulding

{ On occasion the options that you have selected may not coincide making the option unavailable or greyed out. }



SELECT MATERIALS/COLOR

Finish your door off with a material and color.

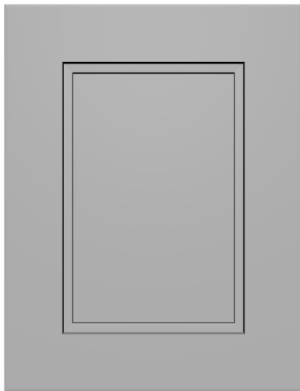
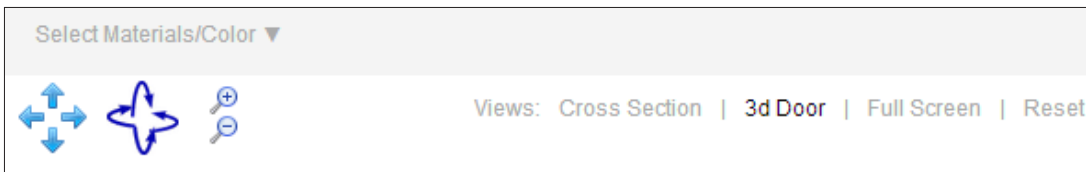


{ If you are unhappy with the color you can return to the material/color palette and reselect or you can reset the color/material. }

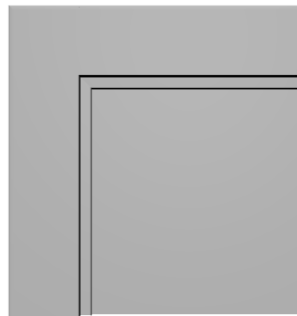
This door is a general representation of your door style. For a more accurate representation of the color, stile and rail widths, profile and grain we recommend ordering a door sample.

VIEWING YOUR DOOR

The 3D Door Builder by Decor gives the flexibility of viewing your door in formats.



3D Door is the default full overall view when your door is being built.



Cross Section allows you to view your door when cut into a quarter, giving you a better understanding of the profiles.

Easily navigate your door by clicking and holding to rotate and move up, down, left and right. Or you can use the navigation tools below:



Use the arrows to **move** your door up, down, left and right.



Click the arrows to **rotate** your door up, down, left and right.

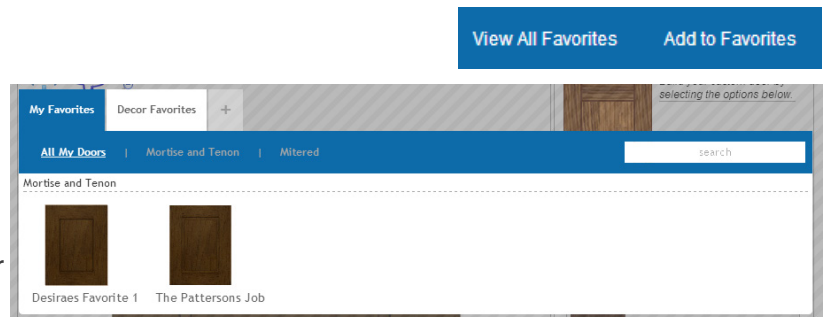


Click the +/- to **zoom** in on your door.

FAVORITES (DEALER VERSION ONLY)

Your favorites gallery is a collection of your custom door styles.

Any door that you create can be added to this gallery to be used at a later date. Favorite door styles can also be deleted from the gallery.



Among "My Favorites" you can also select a door style from Decor Favorites. The door style acts as a base to your design and can be customized to suit your design.

Create additional favorite tabs by clicking the + and naming the group.



SHARING YOUR DOOR

Once your door is created you are able to email it to your dealer/client by selecting the Email button on the main navigation bar. Using your DSS login information the email will be sent from the email on file. If the client should respond to your email that will also be directed back to the email on file.

A screenshot of an email composition window. It has a light gray background. At the top left, there are three fields: 'From:' with a dropdown arrow, 'To:' with a text input field, and 'Message:' with a larger text area. At the bottom center, there is a prominent 'Send Email' button. The window is partially overlaid on a blurred background of a software interface.

You may also print your door details to share with your client or attach to the jobs folder for reference.

ORDER YOUR DOOR (DEALER VERSION ONLY)

Once you've completed your custom door you can then click "OK" and the door will then be added into your Connects order.

A sample of your custom door can also be ordered through Connects.